

EXHIBIT A-25
2001 POPULATION DENSITY – LEAKE COUNTY
30-MINUTE COMMUTE ZONE FROM THE INTERSECTION OF HWY 25 AND HWY 35

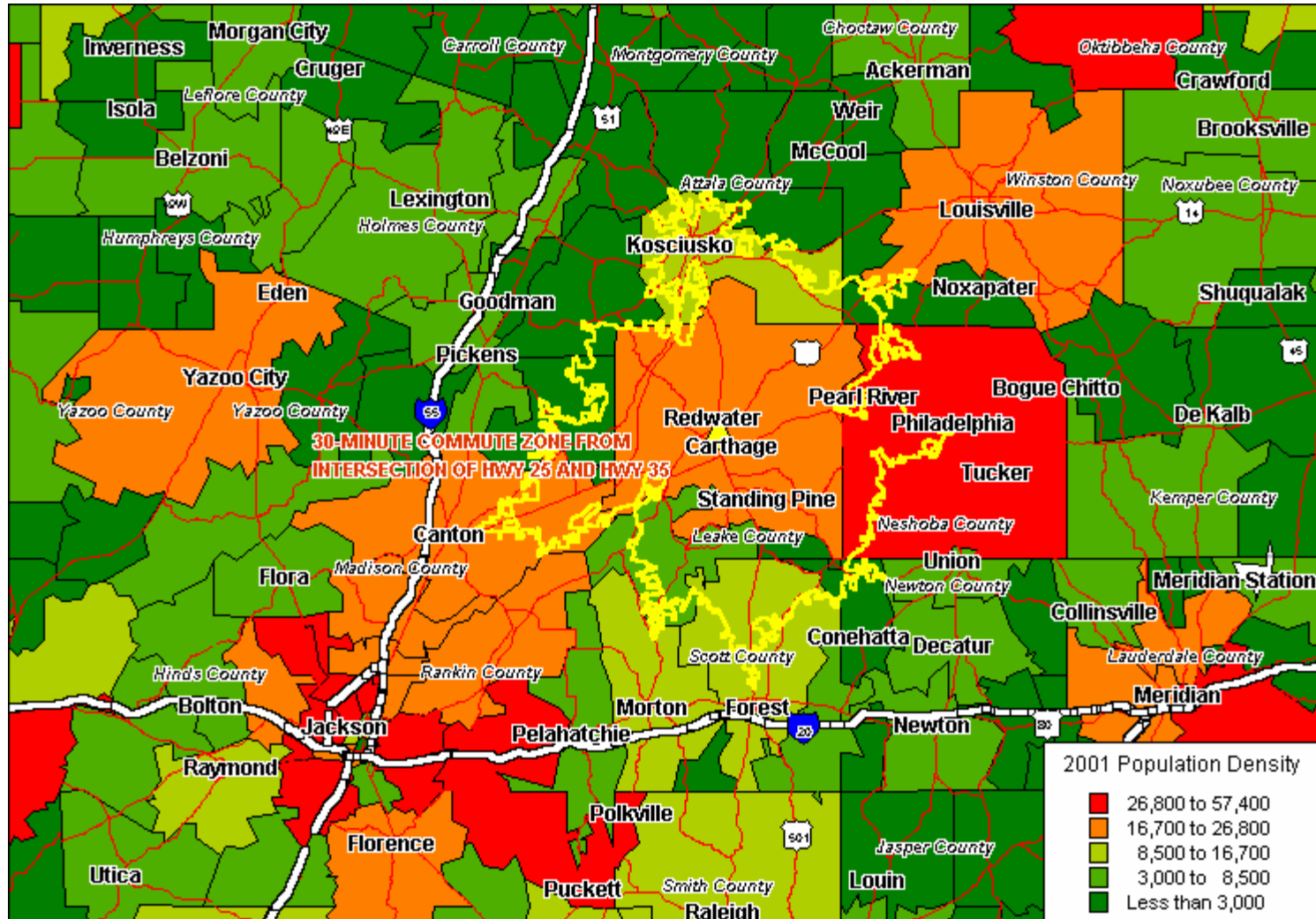


EXHIBIT A-26
PROJECTED POPULATION CHANGE 2001-2006 – LEAKE COUNTY
30-MINUTE COMMUTE ZONE FROM THE INTERSECTION OF HWY 25 AND HWY 35

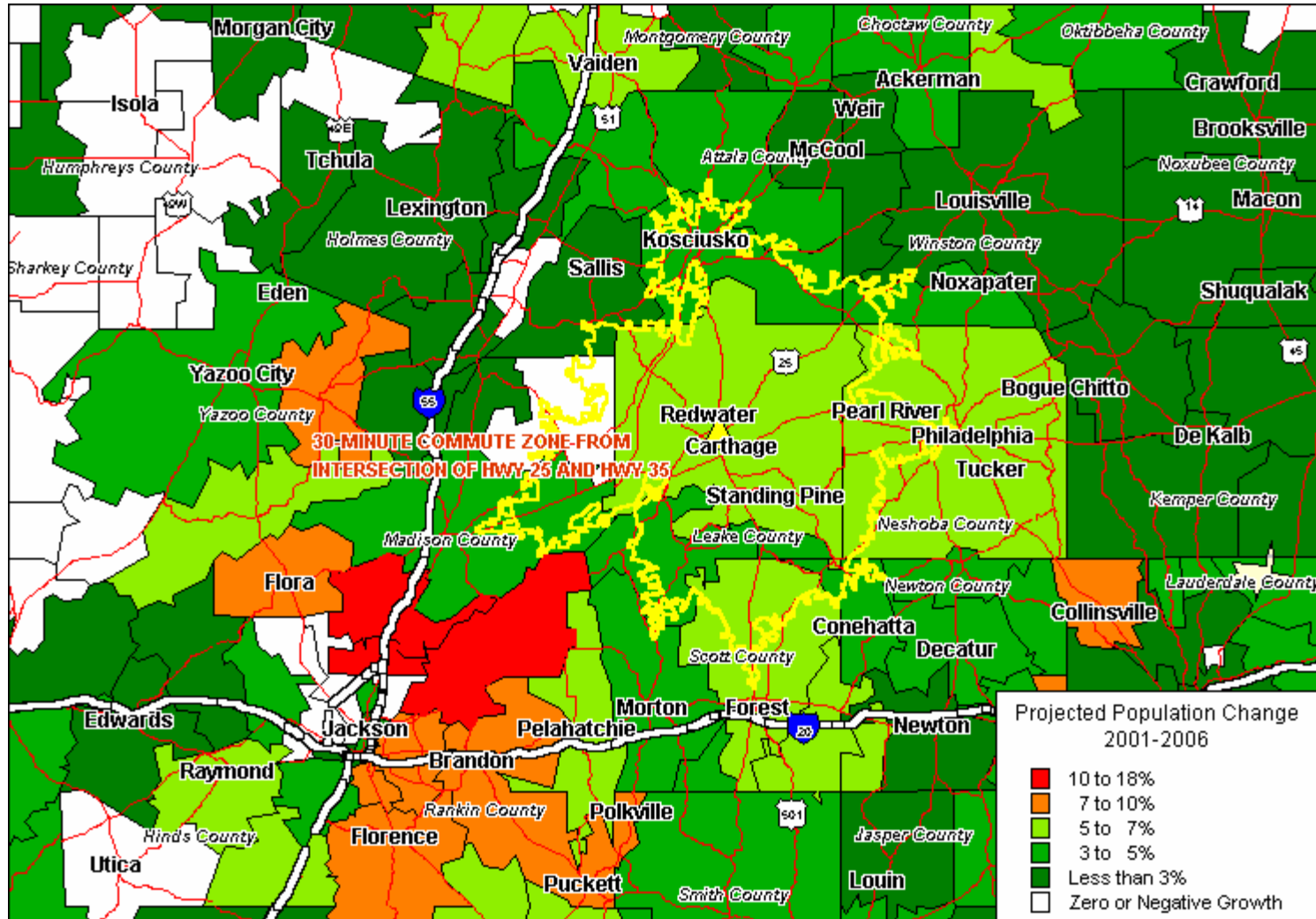


EXHIBIT A-27
DISTRIBUTION OF POPULATION WITH 12-15 YEARS EDUCATION – LEAKE COUNTY
30-MINUTE COMMUTE ZONE FROM THE INTERSECTION OF HWY 25 AND HWY 35

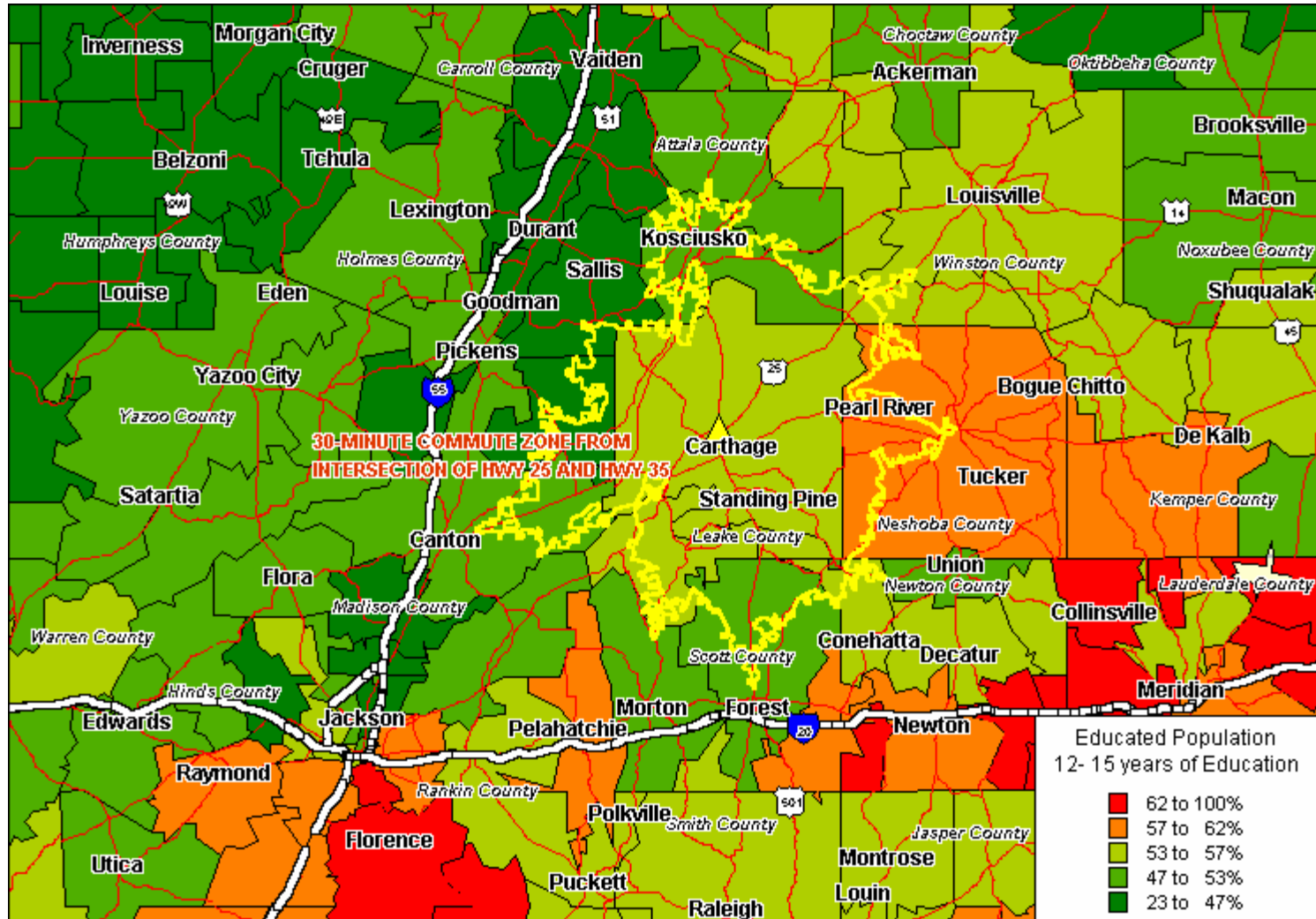


EXHIBIT A-28
DISTRIBUTION OF POPULATION WITH PRECISION PRODUCTION SKILLS – LEAKE COUNTY
30-MINUTE COMMUTE ZONE FROM THE INTERSECTION OF HWY 25 AND HWY 35

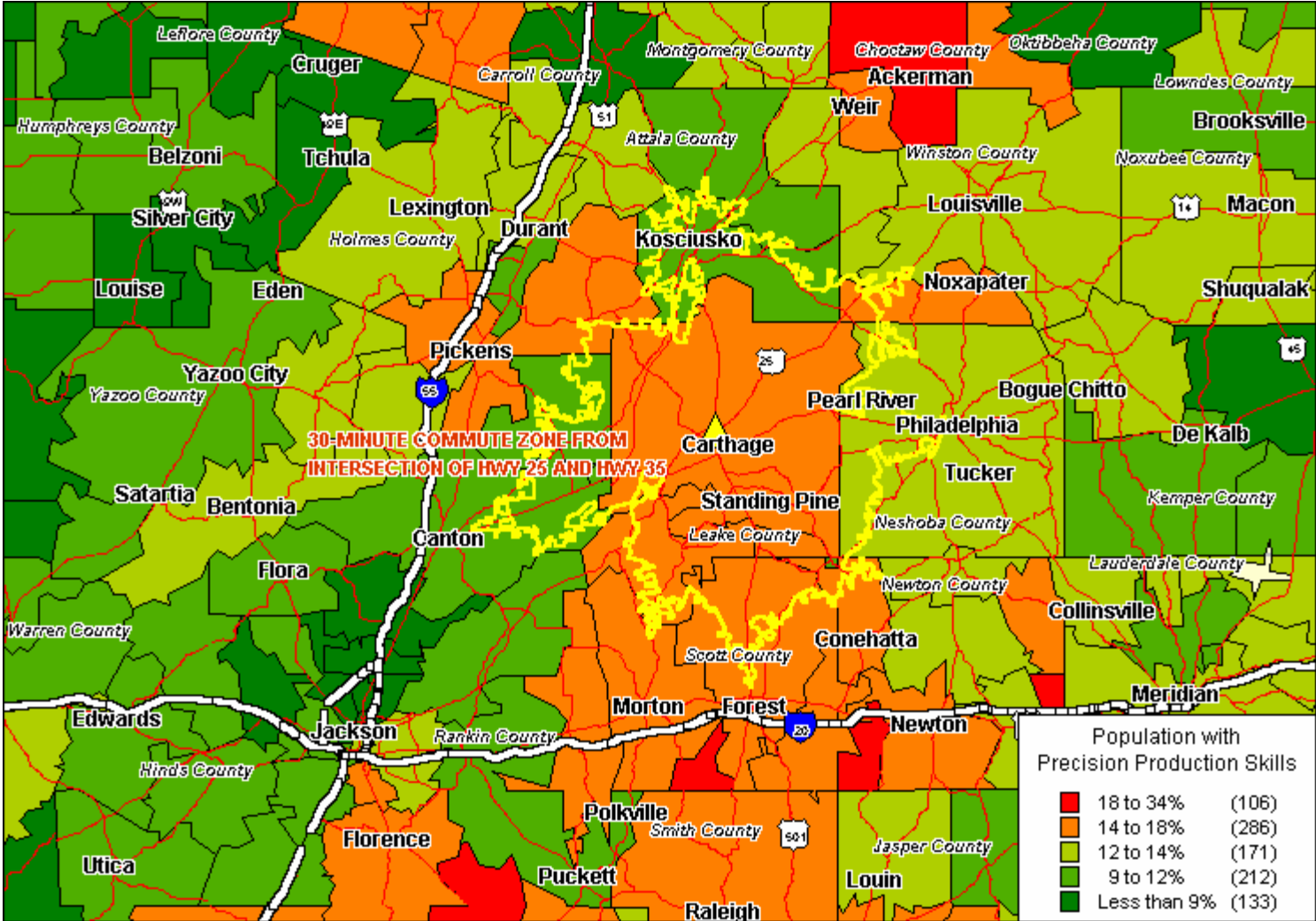
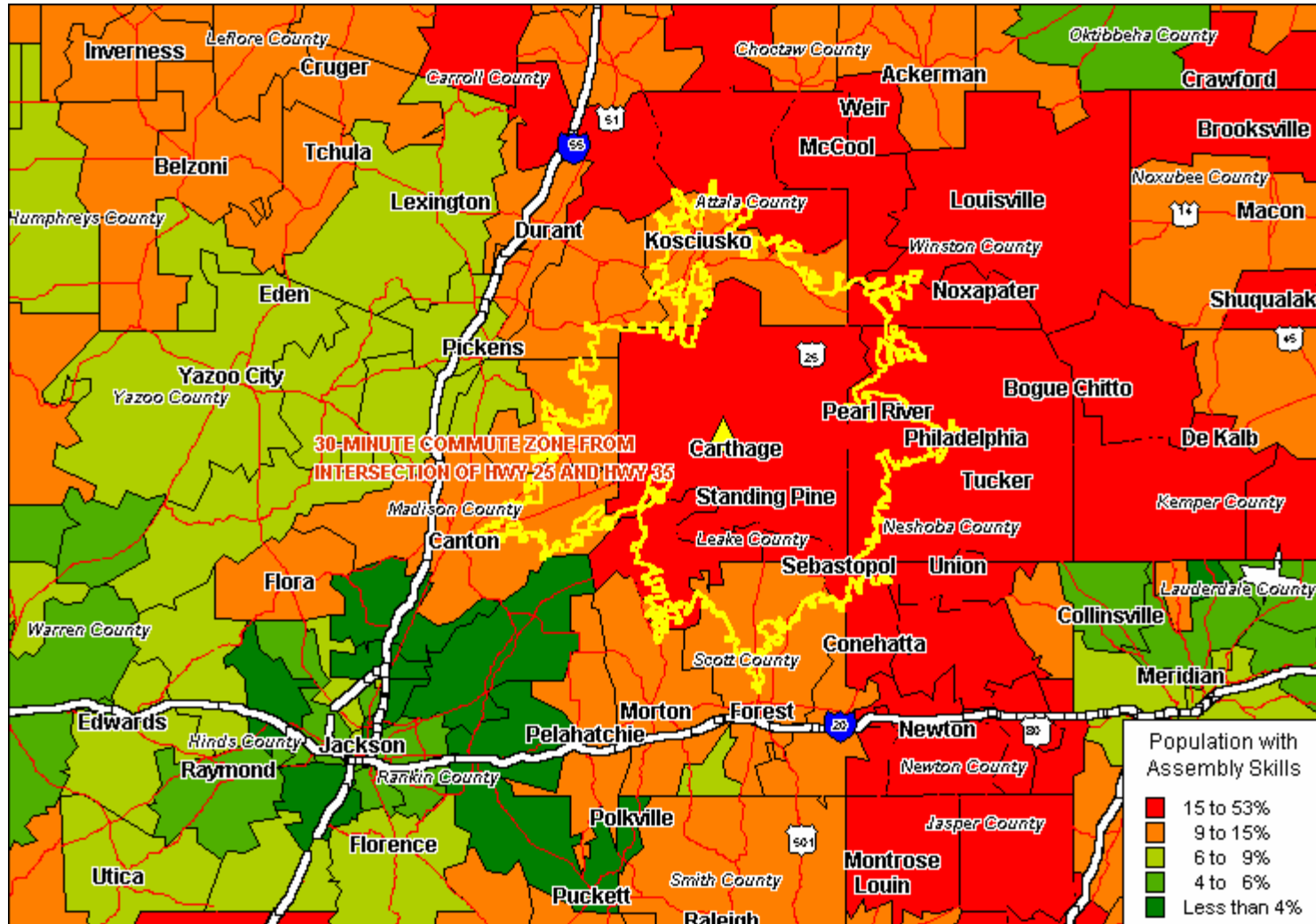


EXHIBIT A-29
DISTRIBUTION OF POPULATION WITH MACHINE OPERATION/ASSEMBLY SKILLS – LEAKE COUNTY
30-MINUTE COMMUTE ZONE FROM THE INTERSECTION OF HWY 25 AND HWY 35



**EXHIBIT A-30
 DISTRIBUTION OF POPULATION WITH CLERICAL SKILLS – LEAKE COUNTY
 30-MINUTE COMMUTE ZONE FROM THE INTERSECTION OF HWY 25 AND HWY 35**

