

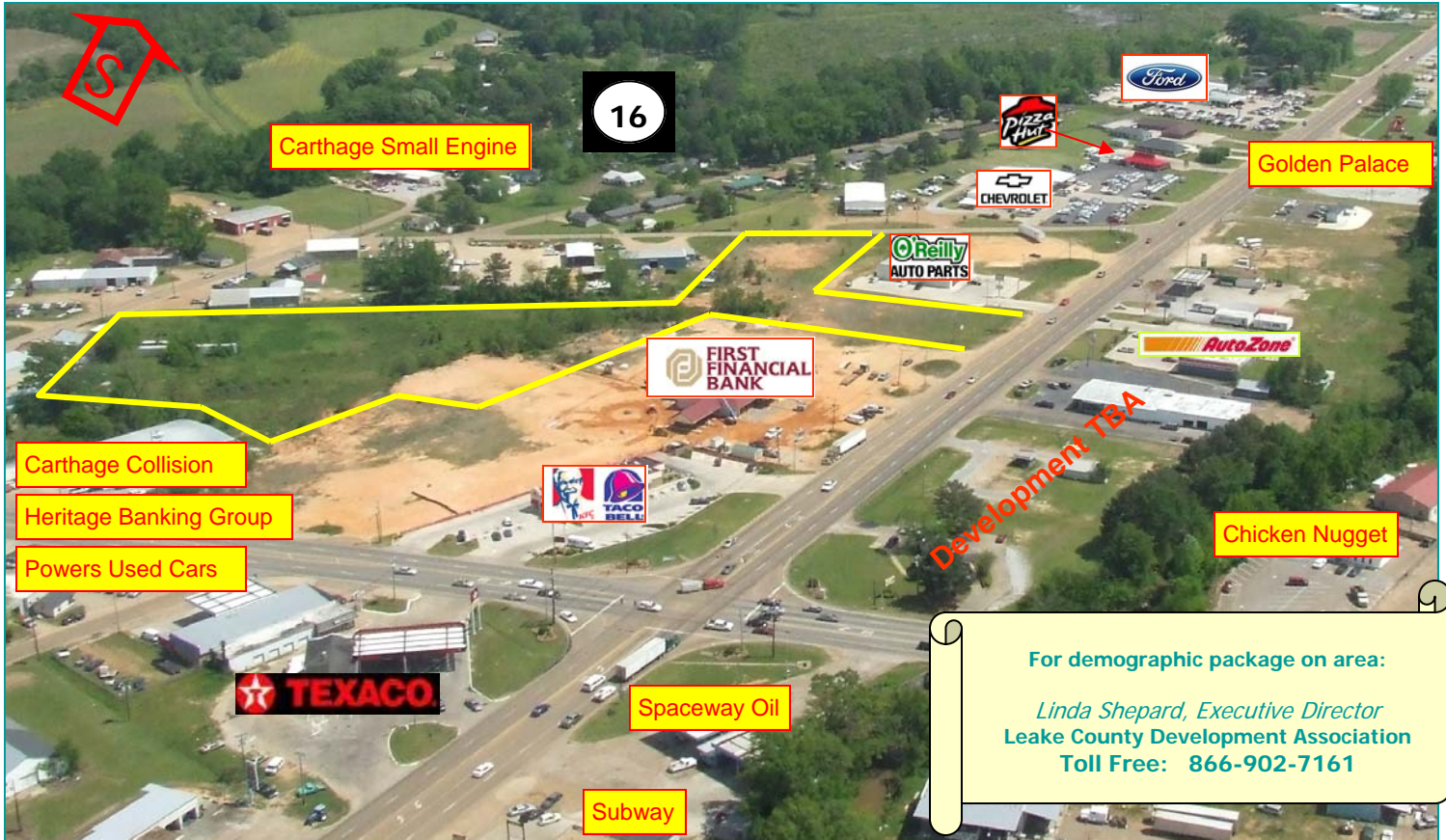


Leake County MISSISSIPPI USA

The Right People. The Right Location.

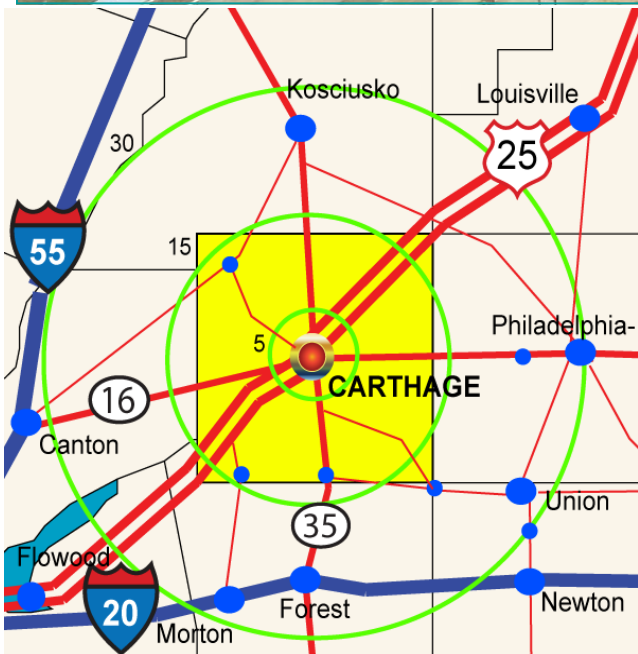


COMMERCIAL OPPORTUNITY: MS Highway 35, Carthage, MS



For demographic package on area:

Linda Shepard, Executive Director
Leake County Development Association
Toll Free: 866-902-7161



PROPERTY:

8 ACRES, ZONED-COMMERCIAL

LOCATION:

119 Highway 16 West, Carthage, Mississippi
Near Intersection of MS Hwy 35 at Hwy 16
2006 DAILY TRAFFIC VOLUME: 15,000+ on MS Hwy 16

PROPERTY CONTACT:

Terry Escue, Martella-Clark Realty
1007 Hwy 16 West, Suite B, Carthage, Mississippi
Cell: 601-416-3583
tescue@martellaclark.com

	<i>Radius :</i>	<i>5 mi</i>	<i>15 mi</i>	<i>30 mi</i>
Population	2006	7,442	25,844	120,701
	<i>projection 2011</i>	7,965	27,434	124,795
Households	2006	2,217	9,119	43,735
	<i>projection 2011</i>	2,212	9,558	45,319
Average HH Income	2006	\$ 42,241	\$ 42,586	\$ 44, 713
	<i>projection 2011</i>	\$ 47,332	\$ 48,348	\$ 50,771

Source: CLARITAS, INC. 2006

www.leakeida.com